

I  gifts

SKS215D

The easy-to-use and customizable professional photo kiosk station.



Sotelec

powered by

CITIZEN

A Sotelec Kiosk Station dedicated device

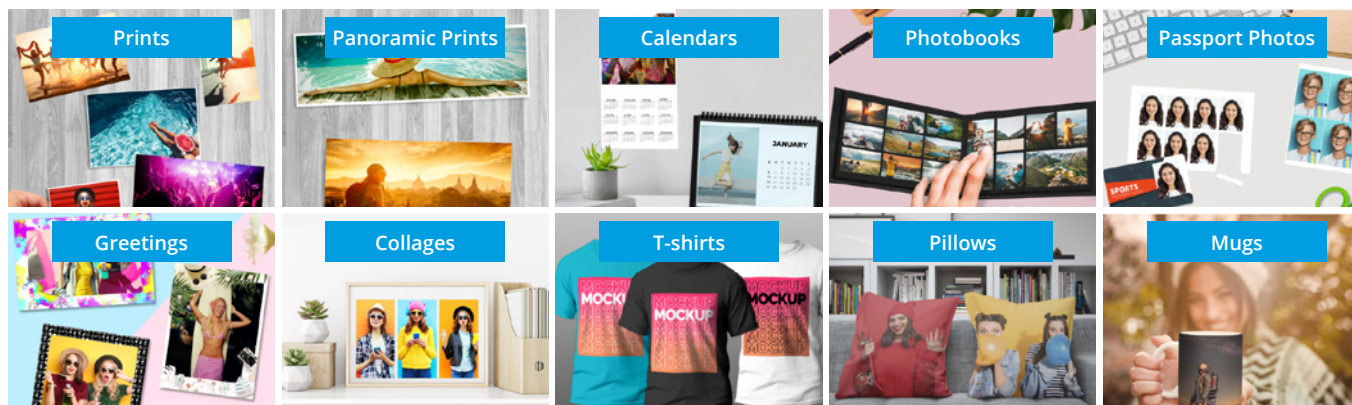


Kiosk Station SKS215D is a dedicated device for Igifts use in the store, in a desktop format based. Incorporates a new software PhotoPrintMe Station that combines local functions with PhotoPrintMe catalogue functions, to provide a fully operational PhotoPrintMe service in the store, including cardreader as photo source (SD cards, pendrives), besides smartphone operation (3-in1 cable).

What is Igifts?

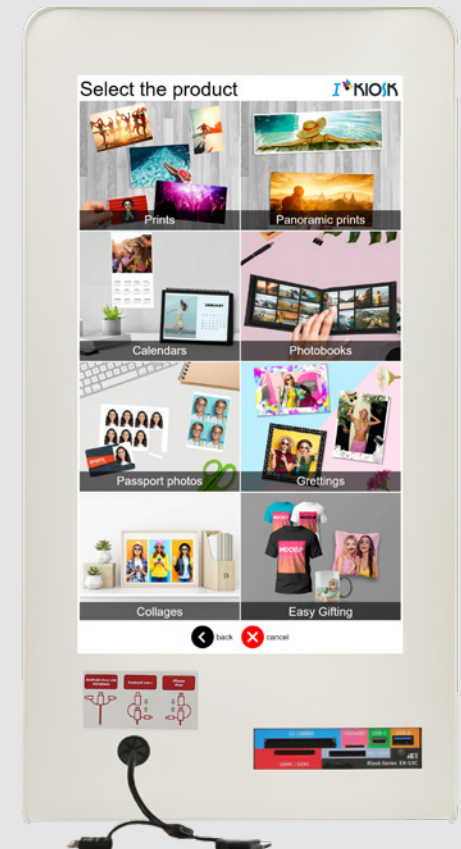


Igifts is an online-based way to order personalized photo gifts. Offer your customers a huge selection like photo prints, photo books, calendars, posters, easy gifts and much more nice gifts. Benefit from the unlimited possibilities and increase your sales with this easy-to-use solution.



Main features

- > Sotelec Kiosk Station dedicated device
- > Small size (only 0,09m2), for a flexible layout in the store
- > Cardreader USB3.0 integrated.
- > Cable 3in1. Type C – Iphone - Android
- > Remote settings and configuration
- > Easy to use by the end user and shop operator
- > Customizable Software



Easy to use and customizable professional photo kiosk

The software within the **Igifts Kiosk Station SKS215D** creates print orders from digital images. Fast, easy and complete. A variety of connection options are available to transfer the image data to the output device via the kiosk system.

Well connected for your customers

Choose the right connection for the image source device:



Memory cards and USB devices: Insert the external memory card or USB device to choose your image direct on the screen.

Smartphones and computer tablets: Connect your mobile device for a fast image transfer via (3-in-1) cable, WiFi, various Apps, Bluetooth, Apple's Air Print and other protocols.

Social Media: Direct print from social media platforms like Facebook, Instagram, Google Photo and various other cloud services.

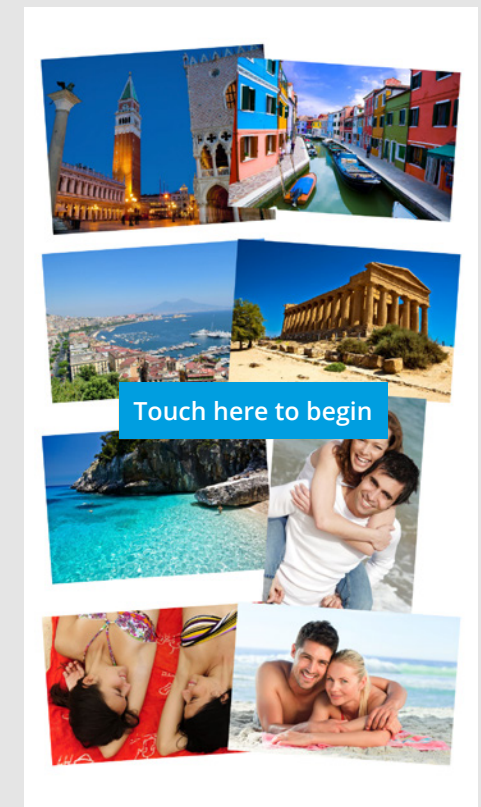
All images will be sent according to instructions, to instant Citizen printers and can be saved in file folders on external memory devices.

Small Size

Designed to meet Retail operating environments, with a reduced footprint size (only 0.09m²) and a comfortable touch display mobile-alike format. Depending on the needs in the store, allows to be configured for a flexible use.

Individual screen saver

The screen saver can be set up to show adverts via pictures, videos, animations and promotional text messages.



Easy to use options for professional image editing

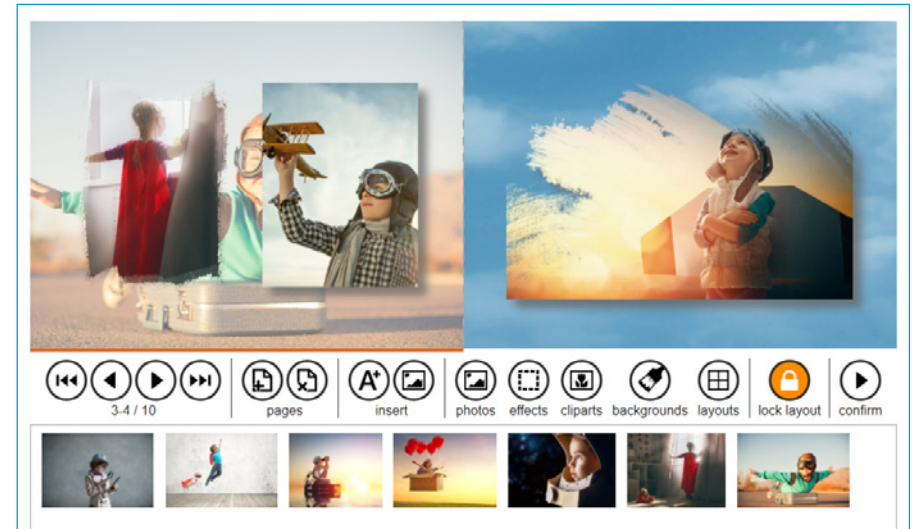
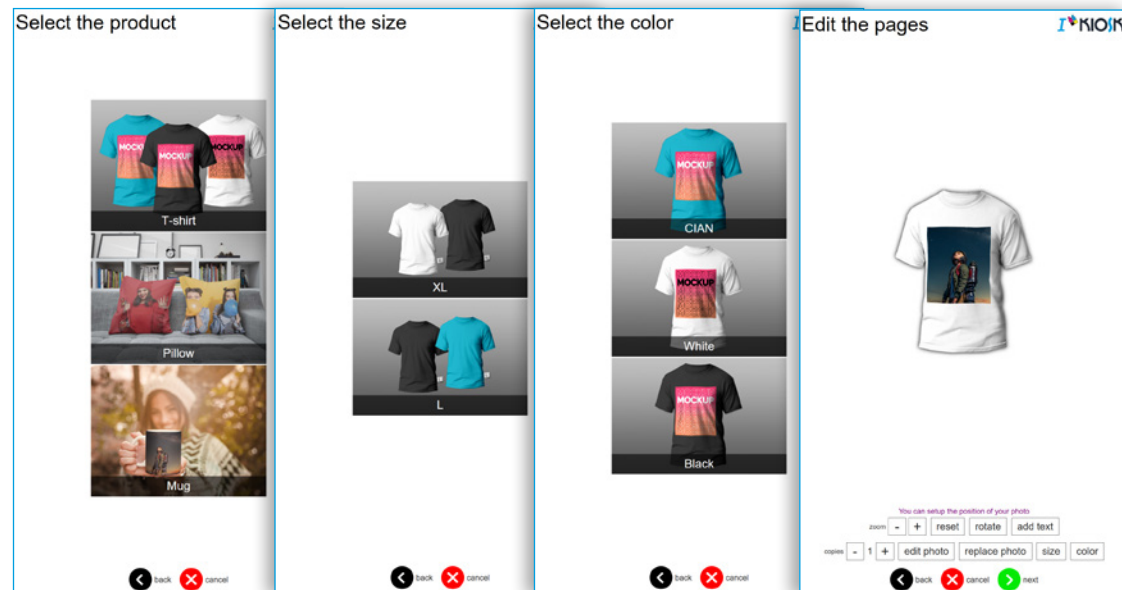
Professional photosets: Customizable formats and prices, for all kinds of events and photosets, also secured by password.

Automatic enhancement of prints with watermarks, date, file name, logos and coloured borders.

Text quickly added to any print.

Many other options like multiple languages, black/white and sepia filters, red eye and colour corrections, fit/fill

Adds the functionality to compose multiple photos in a single print or book, together with customizable backgrounds, cliparts, effects and filters.



Flexible Shop Layout in the store

Igifts Kiosk Station SKS215D is a flexible shop solution to create, collect and manage gifts printing orders. It will fit in almost every store environment and design.



On a desktop



On a Cabinet



With Igifts Wall

Compatible Citizen Photo Printers

Since 2004, **Citizen Systems** designs photo printers with one key consideration in mind: meeting the exact needs of their customers. That's why every one of our photo printers delivers top quality, high speed and outstanding value.

For the keepers of the moment

With a Citizen photo printer you can capture and print these memories in vibrant, rich colours – colours that help your customers to relive their memories.



CX-02



CX-02W



CY-02

Technical specifications

Processor and Computer Intel NUC6CAY: Intel Celeron J3455 @ 1.50GHz, SSD 120GB, RAM 4GB, ATECH EX-S3C Card Reader, Cable 3in1

Operating System Windows 10 LTSB64-bit

Screen Vertical Multitouch Screen 15.6"

Weight 11.5 kg

Size W/D/H: 260 x 350 x 500 mm.

Power 220 v EUR (two outlets required)

External ports 2 x USB / 1 x LAN (RJ45) / 1x VGA

Specifications are subject to change without notice. All pictures shown are for illustration purpose only. Actual product may vary due to product enhancement.