



High speed digital color printer  
**CP-D90DW**

Compact  
High speed printing  
Outstanding print quality  
User-friendly  
Scalability  
Variable print size

■CP-D90DW Specifications

Model	CP-D90DW		
Printing method	Dye sublimation thermal transfer full color. Three-color face progressive printing (yellow, magenta, cyan) and surface lamination		
Gradations	256gradations (8 bit per color, approx. 16.7 million colors)		
Print resolution	300x300DPI		
Print finish	Glossy/Matte		
Paper capacity	Thick media (230μm)	89x127mm (3.5x5")	450
		102x152mm (4x6")	400
		127x178mm (5x7")	230
		152x203mm (6x8")	200
		152x229mm (6x9")	180
	Thin media (210μm)	102x152mm (4x6")	430
Printing time*3	Print size		High speed mode
	89x127mm (3.5x5")		approx. 8.4sec
	102x152mm (4x6")		approx. 7.8sec
	127x178mm (5x7")		approx 13.2sec
	152x203mm (6x8")		approx 14.6sec
	152x229mm (6x9")		approx16.2sec
Interface	Hi-Speed USB Ver. 2.0		
Driver software	Windows®7/8/10(32bit/64bit)*1, MacOS®10.6~10.11*2		
Memory size	128MB		
Dimension (WxDxH)	Approx. 275x365x237mm(10.8"x14.4"x9.3")		
Weight	Approx. 14kg (30.0lb)		
Power supply	100-240V AC 50/60Hz		
Power consumption	100-240V AC 50/60Hz 5.5A		
DC output terminals	12V / 2.0A mx. (high priority) 5V / 2.0A mx. (low priority)		
Accessories	Paper flange(1), Paper flange spacer(1), Ink cassette(1), Paper strip bin(1), Paper tray, AC power code(120V), AC power code(220-240V)(1), CD-ROM(1), Cable ties(2), Securing band/Screws/Washer(1set),Quick set up guide(1)		

\*1: Windows® Vista/7(64-bit)/8(32-bit,64-bit),Mac OS X print driver are available on the website. Windows XP, Windows Vista and Windows 7 are registered trademarks of Microsoft Corporation in the United States and/or other countries.

\*2: Mac OS are trademarks of Apple Computer, Inc. in the United States and/or other countries.

\*3: As of December 2015, excluding data transfer time. Maximum speed continuous printing.

■Part names

Opening the door

Front panel

Right Side panel

Left Side panel

Rear panel

1. ALARM INDICATOR  
2. PAPER RIBBON INDICATOR  
3. POWER INDICATOR 4. PRINT OUTLET  
5. OPEN BUTTON 6. PAPER STRIP BIN  
7. VENTILATION INLET 8. PRINTING UNIT  
9. DOOR

1. VENTILATION INLETS 2. DC POWER SWITCH  
3. 5 V DC OUTPUT TERMINAL USB TYPE-A (2 A MAX.) 4. USB TERMINAL  
5. POWER SWITCH 6. POWER SOCKET (AC LINE)  
7. RECESSED AREA FOR TRANSPORTING 8. SECURING HOLES FOR THE CABLE TIE  
9. HANDLE FOR TRANSPORTING 10. VENTILATION OUTLETS  
11. 12 V DC OUTPUT TERMINAL (2 A MAX.)

■Air-cooling mechanism Perspective view

Front side

Head unit

Rear side

Dust-preventive filter

Blows air out to prevent dust and dirt from entering from the front of the unit.

Power supply

CP-D90DW incorporates a separator design to distribute airflow separately to the power supply and the printing thermal head.The effective air cooling increases the throughput while reducing print contamination.

■Consumable parts

Model	Size	Prints per roll	Rolls per box	Thickness
CK-D735	89x127mm (3.5x5")	450 prints	2	230μm
CK-D746	102x152mm (4x6")	400 prints	2	
CK-D757	127x178mm (5x7")	230 prints	2	
CK-D768	152x203mm (6x8")	200 prints	2	
CK-D769	152x229mm (6x9")	180 prints	2	
CK-D868	102x152mm (4x6")	430 prints	2	210μm
	152x203mm (6x8")	215 prints		



for a greener tomorrow

Eco Changes is the Mitsubishi Electric Group's environmental statement, and expresses the Group's stance on environmental management. Through a wide range of businesses, we are helping contribute to the realization of a sustainable society.

**MITSUBISHI ELECTRIC CORPORATION**  
HEAD OFFICE: TOKYO BLDG., 2-7-3 MARUNOUCHI, CHIYODA-KU, TOKYO 100-8310, JAPAN



**MITSUBISHI  
ELECTRIC**

DIGITAL COLOR PRINTER

*Changes for the Better*



ISO9001  
JQA-0521

High speed digital color printer

# CP-D90DW

Speedier and More beautiful printing is realized!  
Mitsubishi's new compact printer expands  
your business potential!!

Compact  
High speed printing  
Outstanding print quality  
User-friendly  
Scalability  
Variable print size



High reliability supported by more than 30 years of history of  
dye-sub printer development and by operating record of  
more than 100 thousands units in the market

for a greener tomorrow





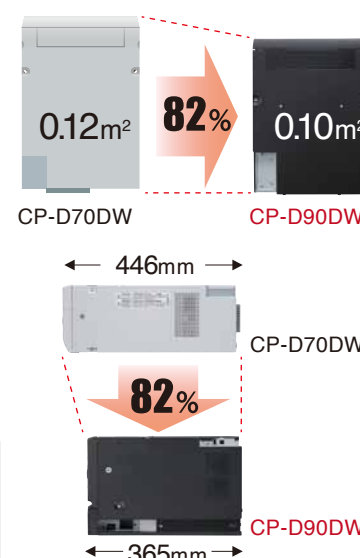
# High speed digital color printer CP-D90DW

## Compact

CP-D90DW has shorter depth compared with the conventional model. Besides, its new design, the hollow on its side and location of USB terminal, enables you to save the installation space. It leads to downsizing of photo systems.

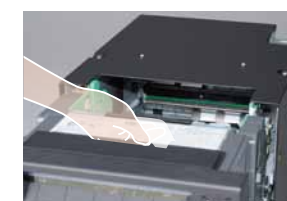


**One of the world's smallest footprint**  
Shortened depth and reviewed cable direction enables you to downsize photo systems. It contributes to cost-down of the system as a whole.



## User-friendly

CP-D90DW is designed to be easily maintained for every users. Various ideas for easy operation, such as front media loading, easy flange attachment, and so on.



### Maintenance

You can reach the thermal head and clean it up easily.



### Power switch location

You can reach it from the front

### Energy saving

The sleep mode greatly saves power consumption while not operating.

### Long Life Head

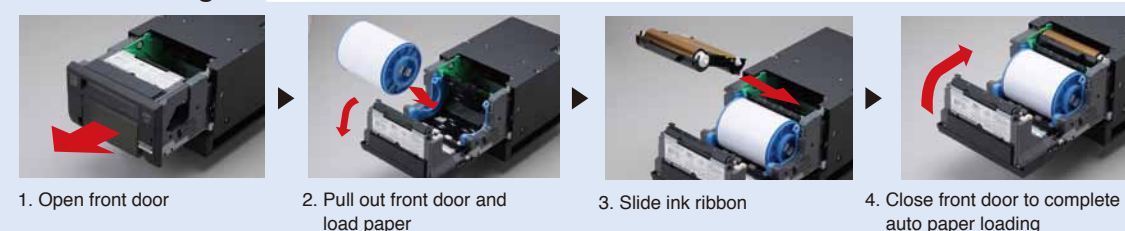
A protective film applied to the head enhances durability, while back layer ink sheet diminishes wear. It realizes long-life of head and reduces running cost.



### Flange attachment

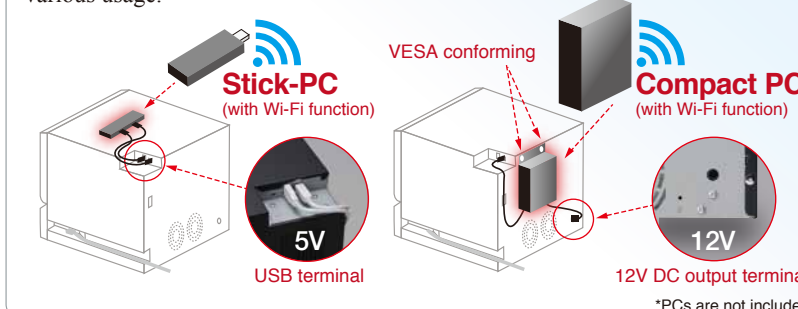
You can easily attach the flanges to the paper by pinching the latches.

### Media loading



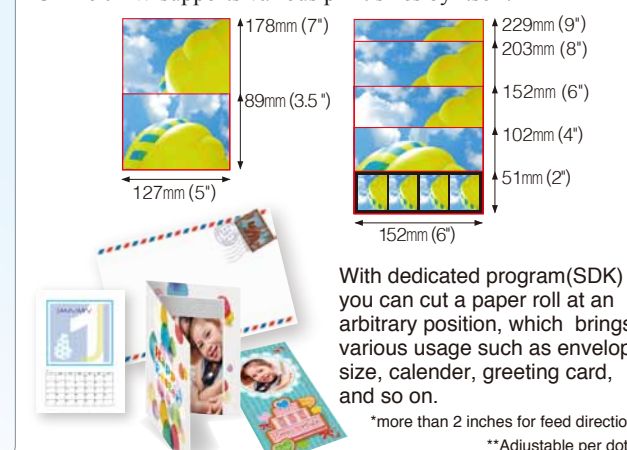
## System extensibility

With DC output terminal of 5V 2A/ 12V 2A, small PC, stick PC and other devices are usable. This new function will broaden the possibility of various usage.



## Variable print size

CP-D90DW supports various print sizes by itself.



### Supports 2 sorts of paper thickness

CP-D90DW is compatible with Thick paper of D70 series(230um) and with Thin paper of D80 series(210um). You can select one depending on required quality and cost.

### Efficient Rewind function

The rewind function allows you to efficiently offer multiple formats from all media

## Outstanding print quality with High speed

Mitsubishi's new "Image Analyzing Engine" is equipped. CP-D90DW inherits high speed of printing which is we proud of and realizes much higher print quality. It represents deeper black and high-contrast graphic. New image processing improves reproducibility of details.

### Improved "First print" speed

CP-D90DW's image processing power can reduce PC's load for image processing and remarkably cut waiting time before starting printing.

### Improved throughput

Thanks for developed thermal head cool down function, CP-D90DW achieves much better throughput, more than 450 prints per hour.

\*By our examination standards \*\*4x6" size \*\*\*excluding media reloading time

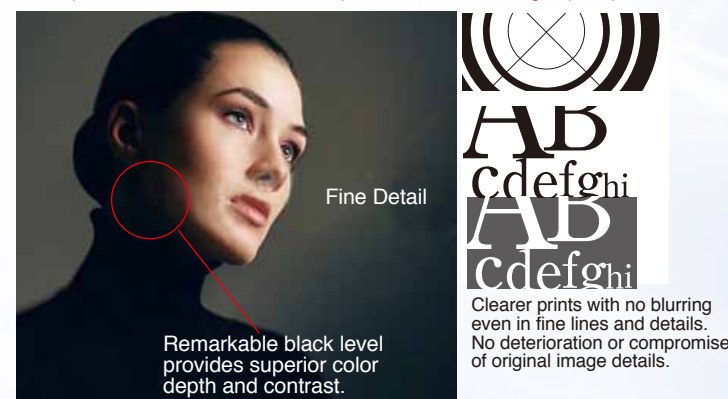
## Deeper Black

Other conventional models



## CP-D90DW

Prints photos with remarkable clarity, vivid colors and high-quality finish.



### New humidity sensor

The newly equipped humidity sensor restrains effect of humidity change and brings stable high quality.

## Automatic Optimization of Printing Speed

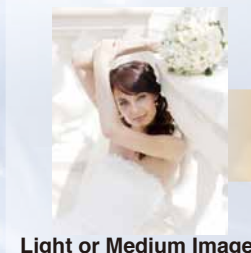
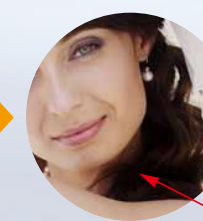


Image Analyzing Engine

approx.  
**7.8sec\***

Print

approx.  
**15.8sec\***



CP-D90DW has 2 printing modes.

**High Quality Mode (Ultra Fine)**

**High Speed Mode (Super Fine)**

In High Speed Mode, as an Image analyzing engine investigates the picture data and optimize printing speed automatically, speedier printing is available.

Despite high speed, appropriate deep black is achieved in dark area.

Adjust printing speed and keep high quality and high density.

\*4x6" size in high speed mode, excluding data transfer time